

Automotive Service Facility 5209 & 5211 East Thomas Road | Phoenix, Arizona



For more information, contact:

John Appelbe
Executive Vice President
602.224.4447
jappelbe@brephoenix.com

Chris Hollenbeck
Senior Associate
602.224.4475
chollenbeck@brephoenix.com

2375 E. Camelback Rd, Suite 300
Phoenix, Arizona 85016
ph: 602.954.9000
fx: 602.468.8588

www.brephoenix.com

Building Features

- For Sale: \$550,000
- Fully functional full service automotive facility
- Two buildings consisting of ±5,073 SF & ±3,024 SF
- Great signage on Thomas Road
- Strong stable economic demographics in area

Demographics:

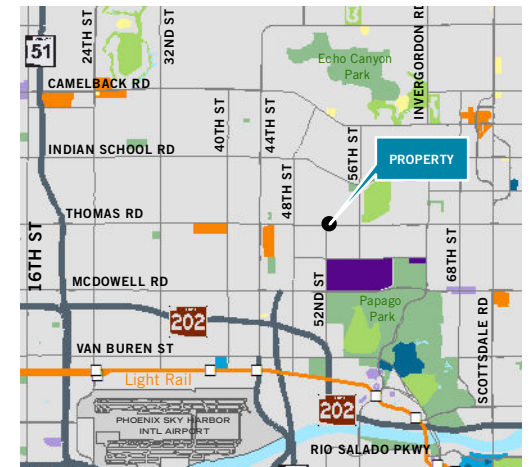
Population *			Average Household Income *		
1 mile	3 miles	5 miles	1 mile	3 miles	5 miles
14,197	126,538	296,224	\$69,523	\$67,810	\$69,798

- Traffic Counts (Main Street & Arizona Ave) **

North 3,400 VPD	South 14,600 VPD
East 36,400 VPD	West 38,400 VPD

* Source: ESRI

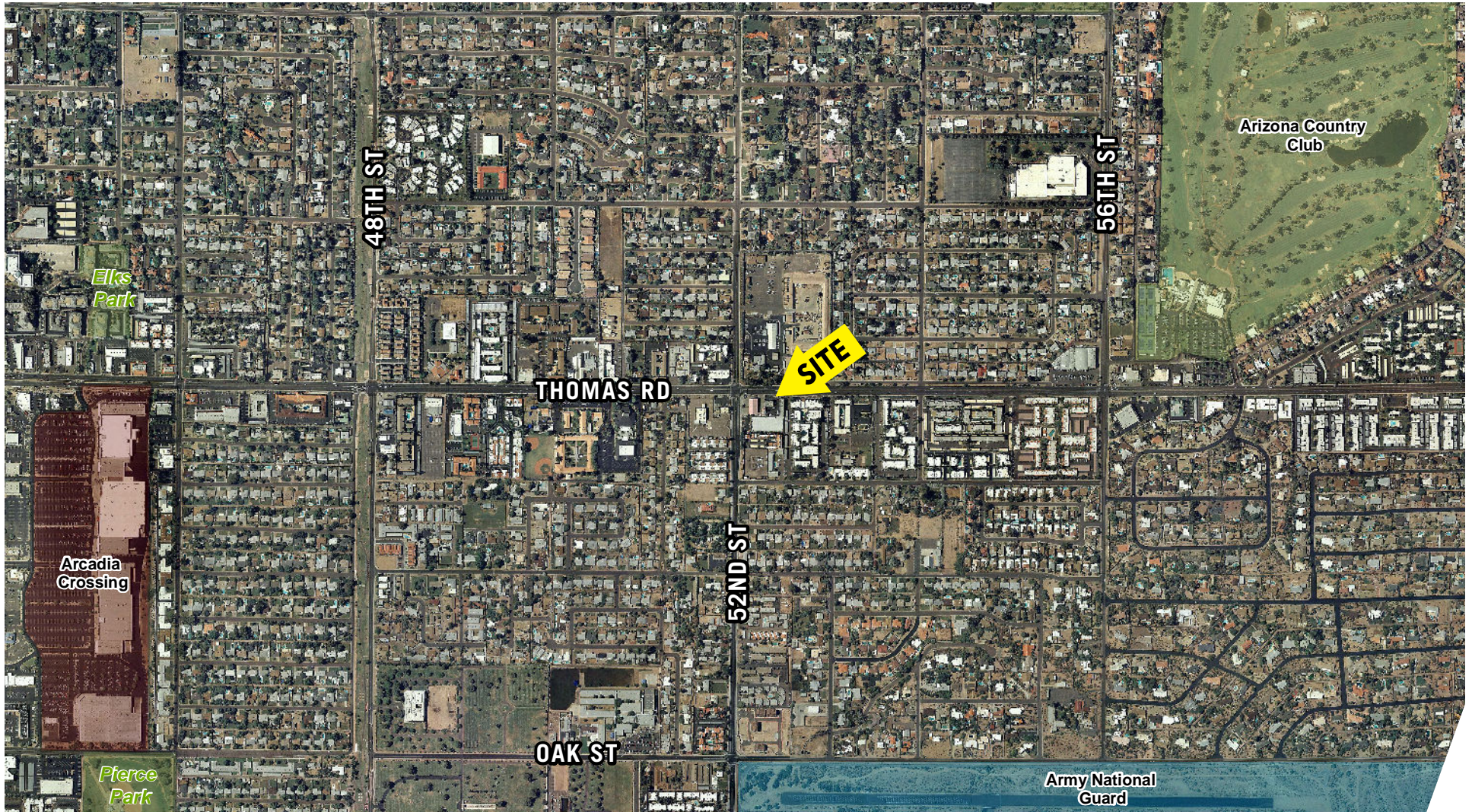
** Source: City of Phoenix, 2011



Cassidy Turley / BRE Commercial

Owner/User Opportunity Automotive Service Facility

5209 & 5211 East Thomas Road | Phoenix, Arizona



For more information, please contact:

John Appelbe
Executive Vice President
602.224.4447
jappelbe@brephoenix.com

Chris Hollenbeck
Senior Associate
602.224.4475
chollenbeck@brephoenix.com

2375 E. Camelback Rd, Suite 300
Phoenix, Arizona 85016

ph: 602.954.9000
fx: 602.468.8588

www.brephoenix.com