

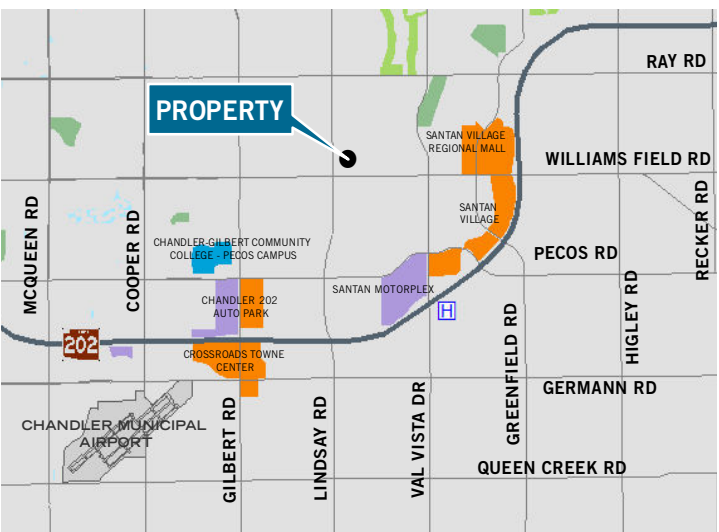
NEW OWNERSHIP



Lindsay Square

Northeast Corner Lindsay Road & Williams Field Road | Gilbert, Arizona

Cassidy Turley BRE Commercial



Building Features

- Landlord offering aggressive deal terms
- Located just 2 miles west of Gilbert Santan Regional Mall and the Loop 202 freeway interchange
- ±3,300 SF Former “Turn-Key” Restaurant Space
- ±15,000 SF Former Ace Hardware Available
- 2010 Population *

<u>1 Mile</u>	<u>3 Miles</u>	<u>5 Miles</u>
10,565	96,833	272,338
- Average Household Income

<u>1 Mile</u>	<u>3 Miles</u>	<u>5 Miles</u>
\$99,918	\$98,031	\$91,157
- Traffic Counts **

North: 15,658, South: 12,999, East: 19,664, West: 16,634

* Source: ESRI, 2011 ** Source: City of Gilbert, 2011

Brad Douglass
Senior Associate
602.224.4406
bdouglass@brephoenix.com

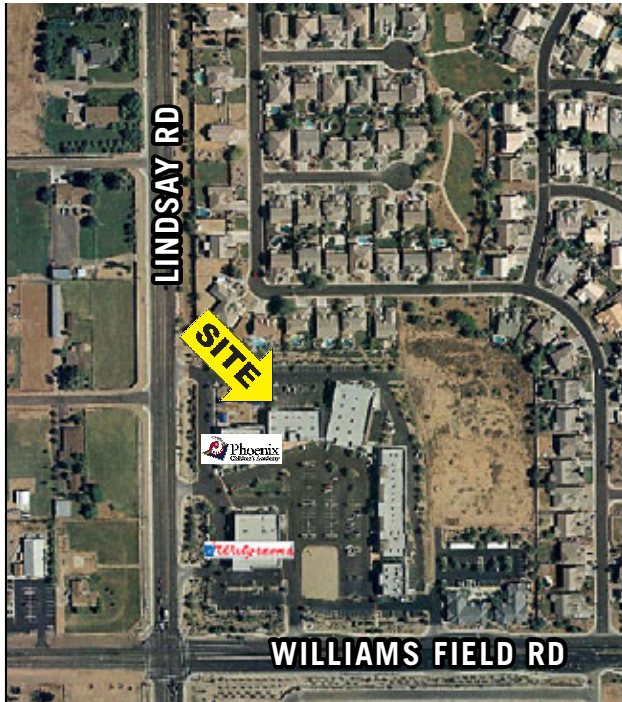
Chris Hollenbeck
Senior Associate
602.224.4475
chollenbeck@brephoenix.com

Cliff Johnston
Senior Vice President
602.224.4445
cjohnston@brephoenix.com

John Appelbe
Executive Vice President
602.224.4447
jappelbe@brephoenix.com

Lindsay Square

NEC Lindsay Road & Williams Field Road | Gilbert, Arizona



Available Suites

- Suite 102: ±15,000 SF - Former Ace Hardware
- Suite 101: ±900 SF
- Suite 102: ±1,400 SF - Turn-key Tanning Salon
- Suite 103: ±2,500 SF
- Suite 110-111: ±2,320 SF
- Suite 112: ±1,160 SF
- Suite 113: ±1,000 SF
- Suite 116: ±3,300 SF - Former Restaurant

For more information, please contact:

Brad Douglass
Senior Associate
602.224.4406
bdouglass@brephoenix.com

Chris Hollenbeck
Senior Associate
602.224.4475
chollenbeck@brephoenix.com

Cliff Johnston
Senior Vice President
602.224.4445
cjohnston@brephoenix.com

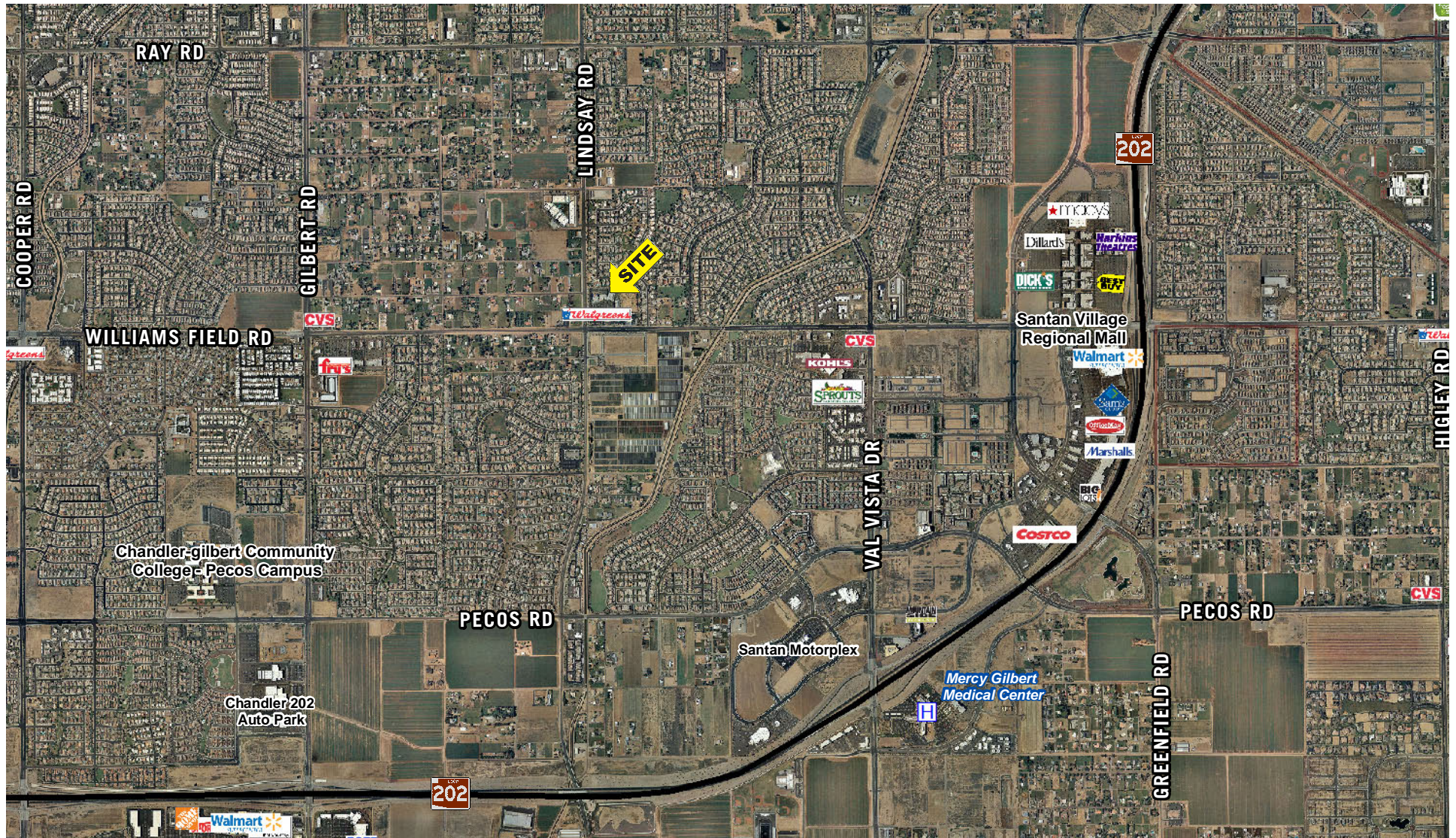
John Appelbe
Executive Vice President
602.224.4447
jappelbe@brephoenix.com

2375 E. Camelback Rd, Suite 300
Phoenix, Arizona 85016
ph: 602.954.9000
fx: 602.468.8588
www.brephoenix.com

Cassidy
Turley / BRE
Commercial

Lindsay Square

NEC Lindsay Road & Williams Field Road | Gilbert, Arizona



For more information, please contact:

Brad Douglass
Senior Associate
602.224.4406
bdouglass@brephoenix.com

Chris Hollenbeck
Senior Associate
602.224.4475
chollenbeck@brephoenix.com

Cliff Johnston
Senior Vice President
602.224.4445
cjohnston@brephoenix.com

John Appelbe
Executive Vice President
602.224.4447
jappelbe@brephoenix.com

2375 E. Camelback Rd, Suite 300
Phoenix, Arizona 85016
ph: 602.954.9000
fx: 602.468.8588
www.brephoenix.com

Cassidy / BRE
Turley / Commercial