

Fry's Marketplace Anchored Center NWC Yuma & Sarival Road, Goodyear, AZ



For more information, contact:

John Appelbe
Executive Vice President
602.224.4447
jappelbe@brephoenix.com

Cliff Johnston
Senior Vice President
602.224.4445
cjohnston@brephoenix.com

Chris Hollenbeck
Senior Associate
602.224.4475
chollenbeck@brephoenix.com

2375 E. Camelback Rd, Suite 300
Phoenix, Arizona 85016

ph: 602.954.9000
fx: 602.468.8588

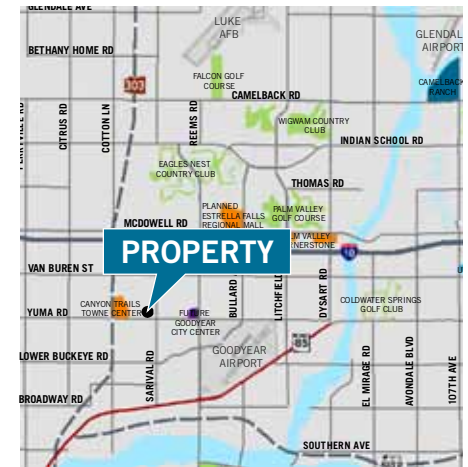
www.brephoenix.com

Building Features

- Only Grocery Anchored Center at Yuma & Sarival Intersection
- Great Access from I-10
- Population Increase of +550% Since 1990
- Pads Available For Sale or Lease
- C-2 Zoning - City of Goodyear
- ±1,000 SF - 17,470 SF Available
- Drive-thru Pads Available
- Call for Rates

Demographics:

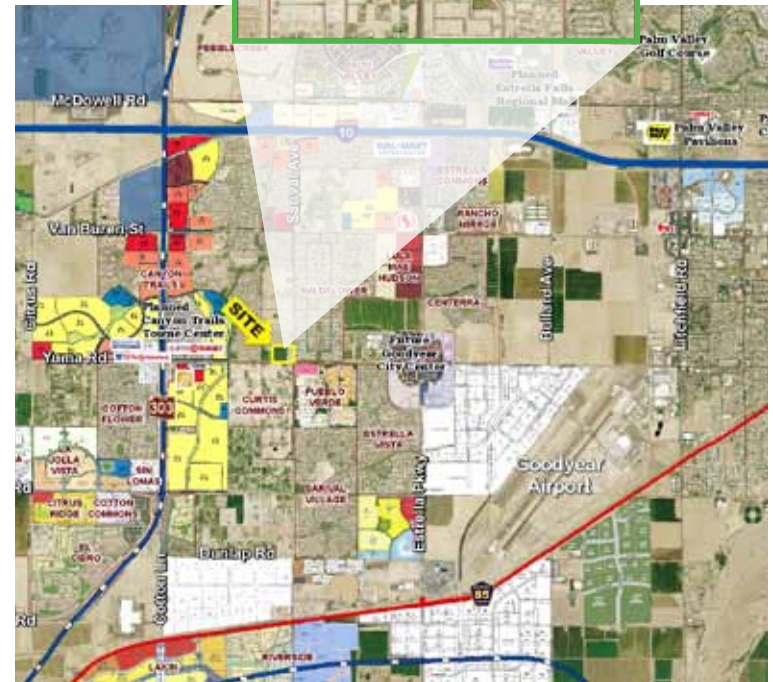
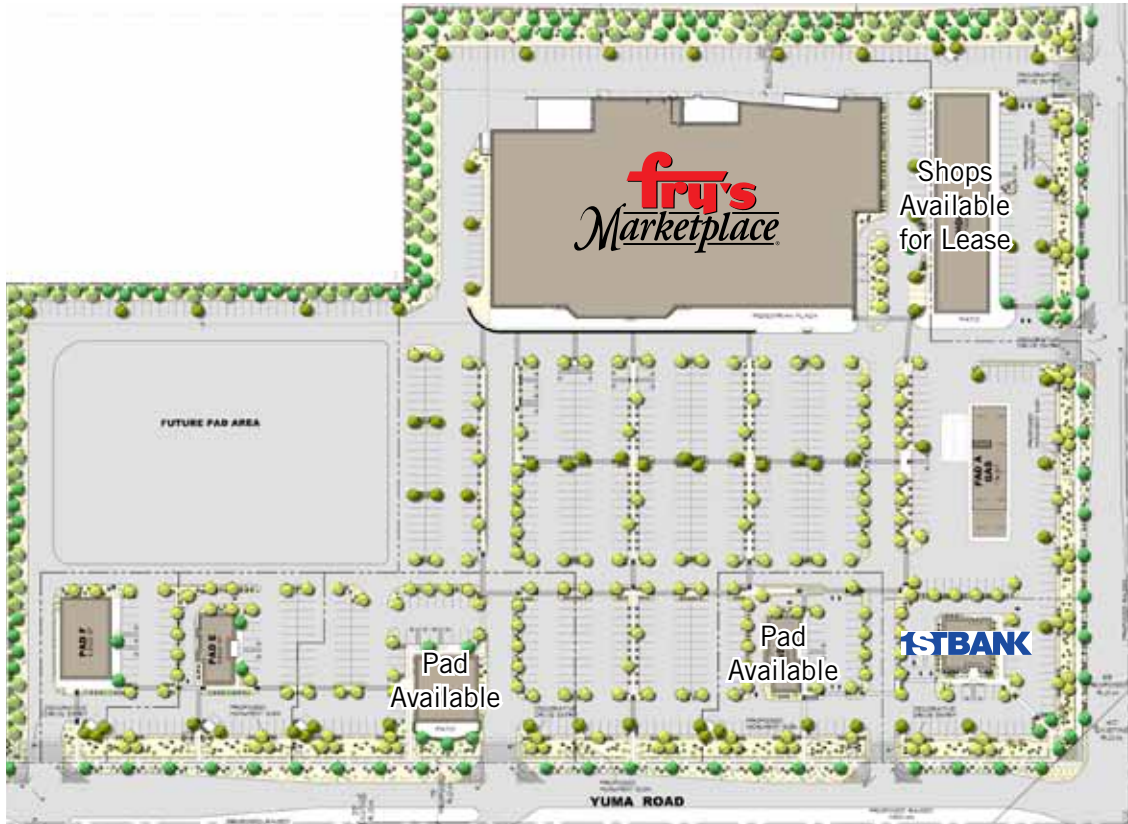
Population			Average Household Income		
1 mile	3 miles	5 miles	1 mile	3 miles	5 miles
11,037	33,825	88,865	\$82,261	\$77,199	\$78,404



**Cassidy
Turley** / BRE
Commercial

Fry's Marketplace Anchored Center

NWC Yuma & Sarival Road, Goodyear, Arizona



Join **Fry's Marketplace**



#1 Brother's Pizza
and more...

For more information, please contact:

John Appelbe
Executive Vice President
602.224.4447
jappelbe@brephoenix.com

Cliff Johnston
Senior Vice President
602.224.4445
cjohnston@brephoenix.com

Chris Hollenbeck
Senior Associate
602.224.4475
chollenbeck@brephoenix.com

2375 E. Camelback Rd, Suite 300
Phoenix, Arizona 85016

ph: 602.954.9000
fx: 602.468.8588

www.brephoenix.com

Cassidy Turley BRE Commercial