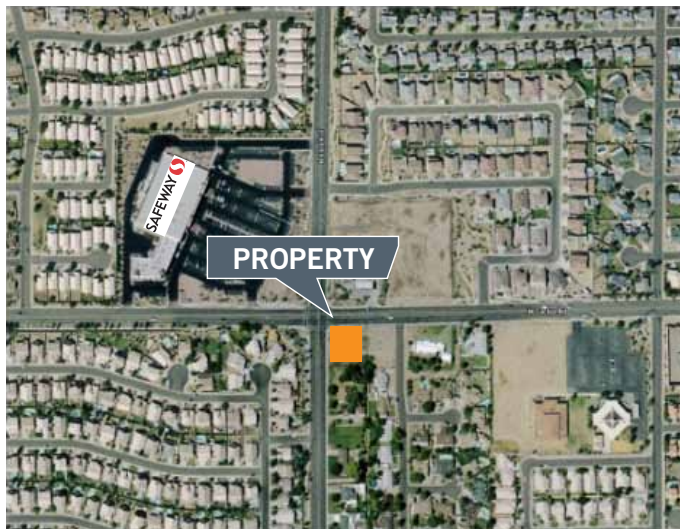
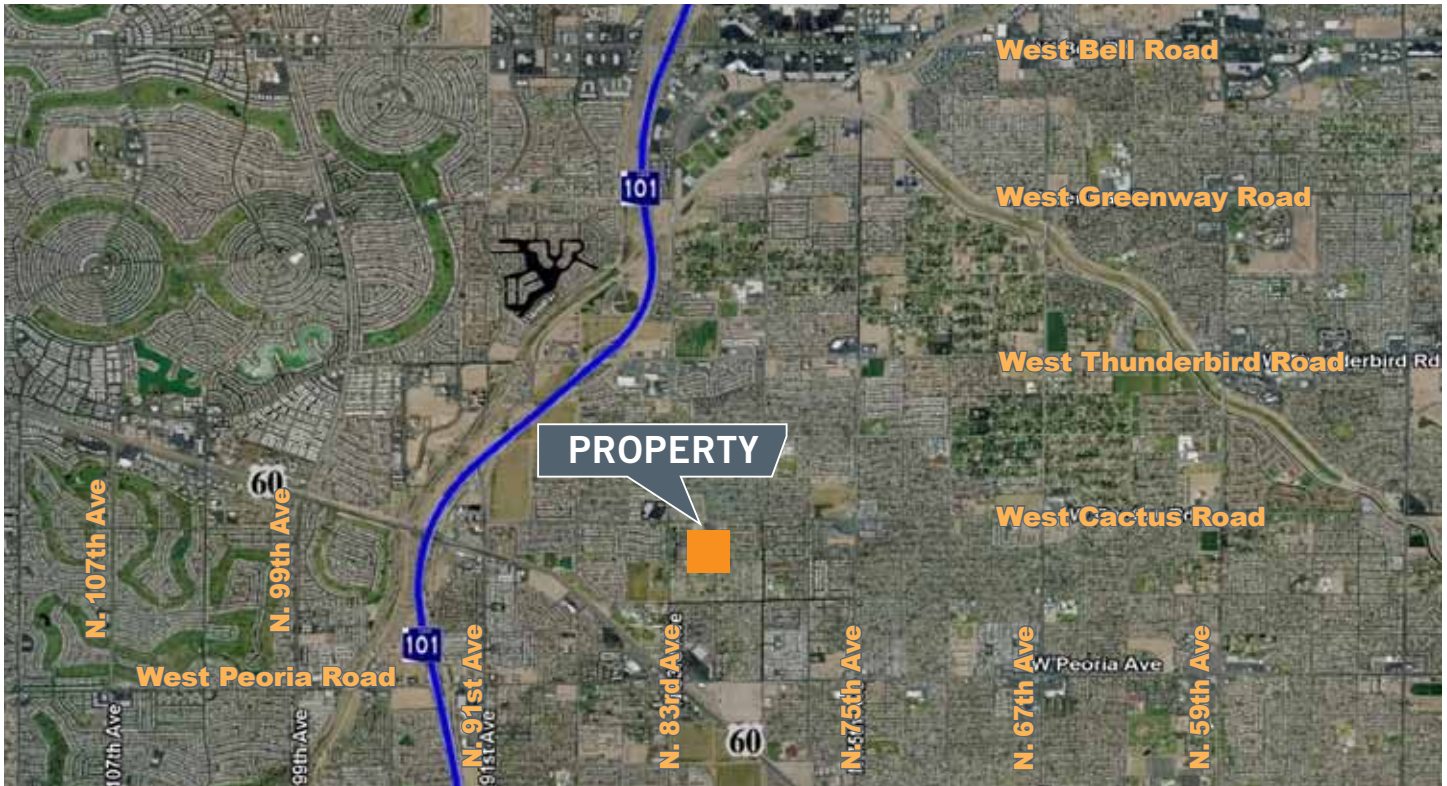


SEC of 83rd Avenue and Cactus Road

Peoria, Arizona



Property Highlights:

- SIZE: Approximately +/- 23,980 SF
- CALL FOR PRICING
- ZONING: C-1, City of Peoria
- PARCEL #: 142-04-018 (See reverse side for plat map)

Demographics:

- | | |
|-------------------|-------------------------------|
| • Traffic Counts: | • Population: (2008 estimate) |
| North: 32,200 | 1 Mile: 20,029 |
| East: 27,600 | 3 Miles: 115,540 |
| South: 30,700 | 5 Miles: 318,079 |
| West: 26,300 | |

For more information, please contact:

John M. Applebe, III
Executive Vice President
602-224-4447
jappelbe@brephoenix.com

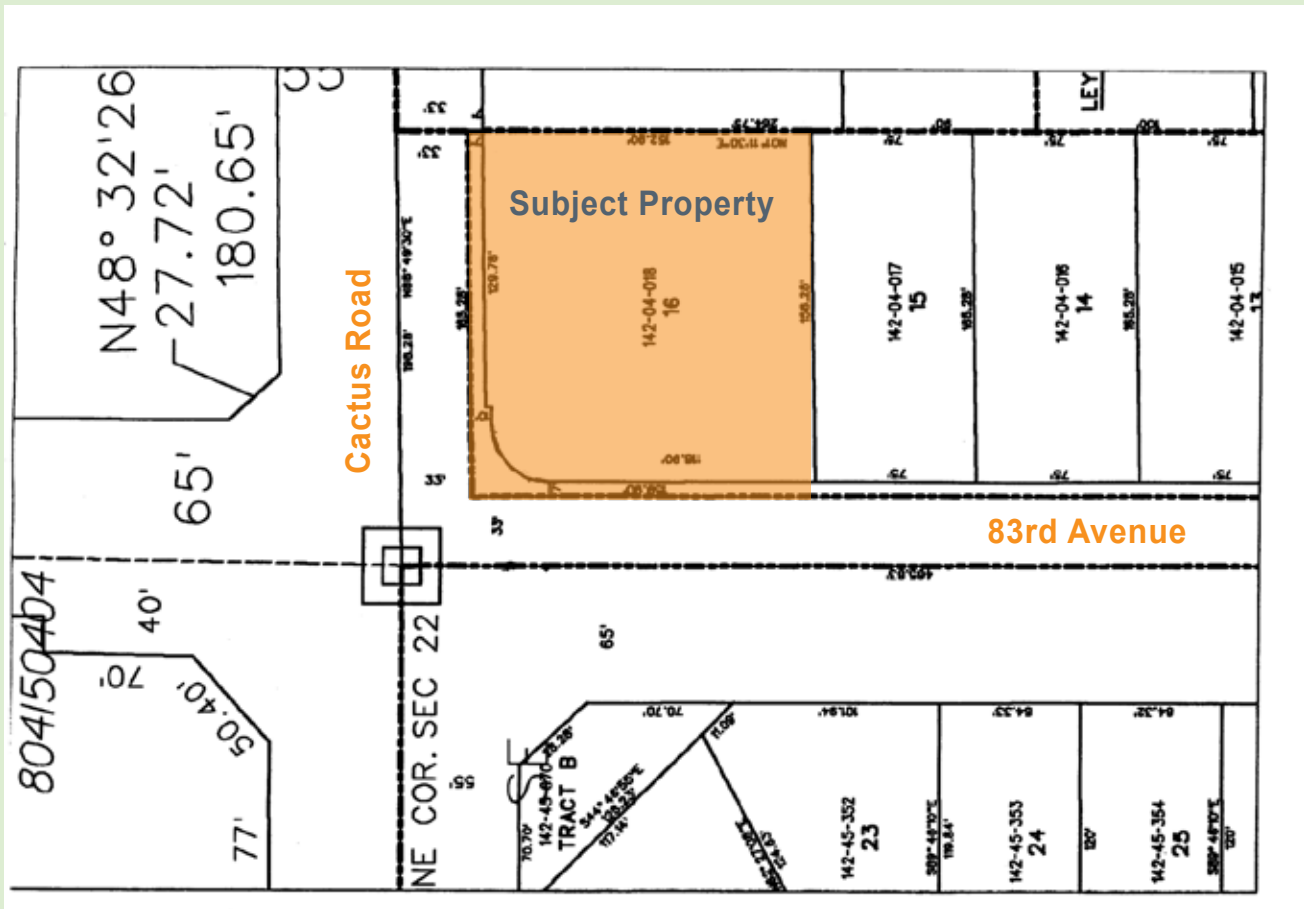
Chris Hollenbeck
Senior Associate
602-224-4475
chollenbeck@brephoenix.com

2375 E. Camelback Rd, Suite 300
Phoenix, Arizona 85016
ph: 602.954.9000
fx: 602.468.8588
www.brephoenix.com

SEC of 83rd Avenue and Cactus Road

Peoria, Arizona

COMMERCIAL LAND FOR SALE



N

For more information, please contact:

John M. Applebe, III
Executive Vice President
602-224-4447
jappelbe@brephoenix.com

Chris Hollenbeck
Senior Associate
602-224-4475
chollenbeck@brephoenix.com

2375 E. Camelback Rd, Suite 300
Phoenix, Arizona 85016

ph: 602.954.9000
fx: 602.468.8588

www.brephoenix.com